

The ideal CNC milling machine for aluminium cutting as described:

**Technical Data:**

- 2.0 kW spindle, direct shank clamping
- 15fold automatic tool changer
- Installation dimensions (W x D x H) without terminal 1,740 mm x 1,740 mm x 1,950 mm
- Weight approx. 1,300 kg



DATRON M8Cube	✓
2.0 kW spindle with direct shank clamping, incl. spray unit	✓
CNC hand-held control unit Pro B10-2 HSCpro	✓
Terminal "Expert"	(optional)
Terminal "Standard"	✓
Minimum-quantity cooling lubrication system, incl. spray unit	(optional)
Tool changer, 15fold, direct shank clamping, incl. integrated tool length sensor	✓
Precision tool length sensor	(optional)
Software package PerfectCut	(optional)

**Optional accessory technology packages:**

We offer a series of powerful accessory combination packs at attractive prices:

**Vacuum Technology**

DATRON vacuum plates feature high flexibility, high comfort of use and short changeover times.

- Vacuum distributor 2fold Pro
- Vacuum plate meandering groove 1,000 x 500 x 30 mm
- Vacuum pump 100 cbm, 3 x 400 V, 16 A, 1 1/4", Pro

**XYZ Sensor**

The XYZ sensor guarantees short setup times, increased precision and cost-efficiency by automatically measuring reference edges and height profile.

- Precision sensor ZTP-R
- 3D-(X,Y) extension for X, Y, Z sensor

**Short-stroke clamping element**

The DATRON short-stroke clamping element is a smart high-tech time-saving element. It is used everywhere where high flexibility, high operating comfort and short conversion times are required.

- T-slot module clamping plate 500 x 250 mm with fixed jaw
- Short-stroke clamping element pneumatic-hydraulic

**CNC milling tools**

Due to years of experience and intensive communication with our customers, we develop tools especially designed for high-speed machining.

- Customer specific tool package

**Software Modules**

Fast CAD/CAM data transfer and an easy-to-use software.

- DATRON CNC v9 ISO+
- DATRON CNC v9 Expert, incl. ISO+
- Mastercam milling entry package, wire frame model (DesignLT)
- DATRON PerfectCut controur smoothig filter

**Training**

Our system training sessions allow you to acquire all the essentials to use our machines and systems effectively and efficiently in a very short time.

- e.g. 3-days-training in DATRON Technology Centre, Mühlital

Our service is always available to you!

**Decentralised**

We are represented wherever we are needed. The local service team of our representatives abroad is at your disposal. Closeness saves time and money: for this reason, DATRON offers several service centres in Germany and worldwide at many of our more than 20 representative offices and agents.



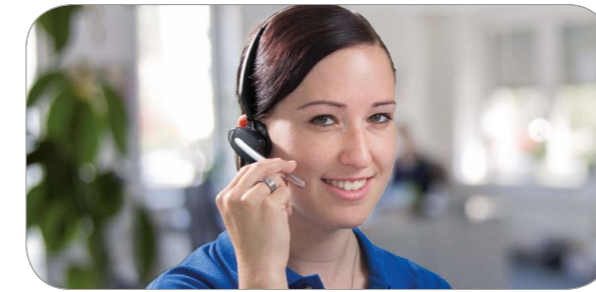
**Cost-effective**

Teleservices, e-Messenger, remote maintenance: we offer the latest information technologies for the fastest possible diagnoses and cost effective service.



**Friendly and Reliable**

Our hotline will help you to find solutions and solve problems, even with software and programming issues. A comprehensive stock of spare parts guarantees shortest delivery times.



**Competence**

Trained staff and many years of application experience and in-house practice guarantee the high quality of DATRON's service worldwide. As a result you get sound and competent advice and fast troubleshooting.



CNC Machining System  
**DATRON M8Cube**

**HSC Aluminium Machining**  
Example: Frontpanel

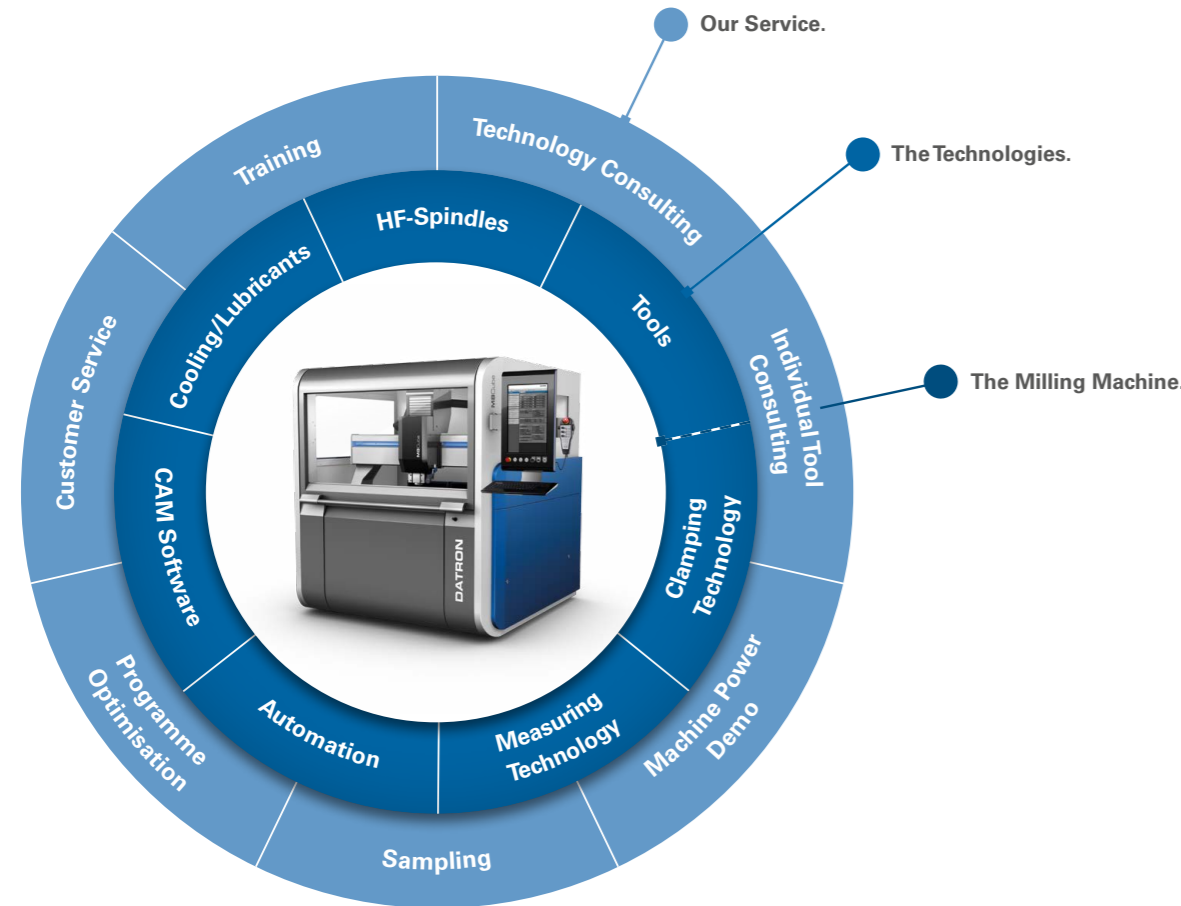


Watch the multifarious machining of sheets using DATRON CNC technology!

Scan the QR code with your smartphone in order to watch the video or visit our YouTube channel and learn more about the diverse applications of DATRON CNC milling machines: [www.youtube.com/DATRONAG](http://www.youtube.com/DATRONAG)

More than just machine construction - You Are in Expert Hands From A to Z

We at DATRON see ourselves as your partner for a successful production. Our service: Everything from one source. DATRON not only offers cutting-edge machine constructions with "Made in Germany" solidity and reliability. We accompany you through the entire workflow from technology consulting over the sales process, optimal maintenance and repair services up to training and give you tips for a energy- and cost-efficient production.



The perfect machining system for your application:

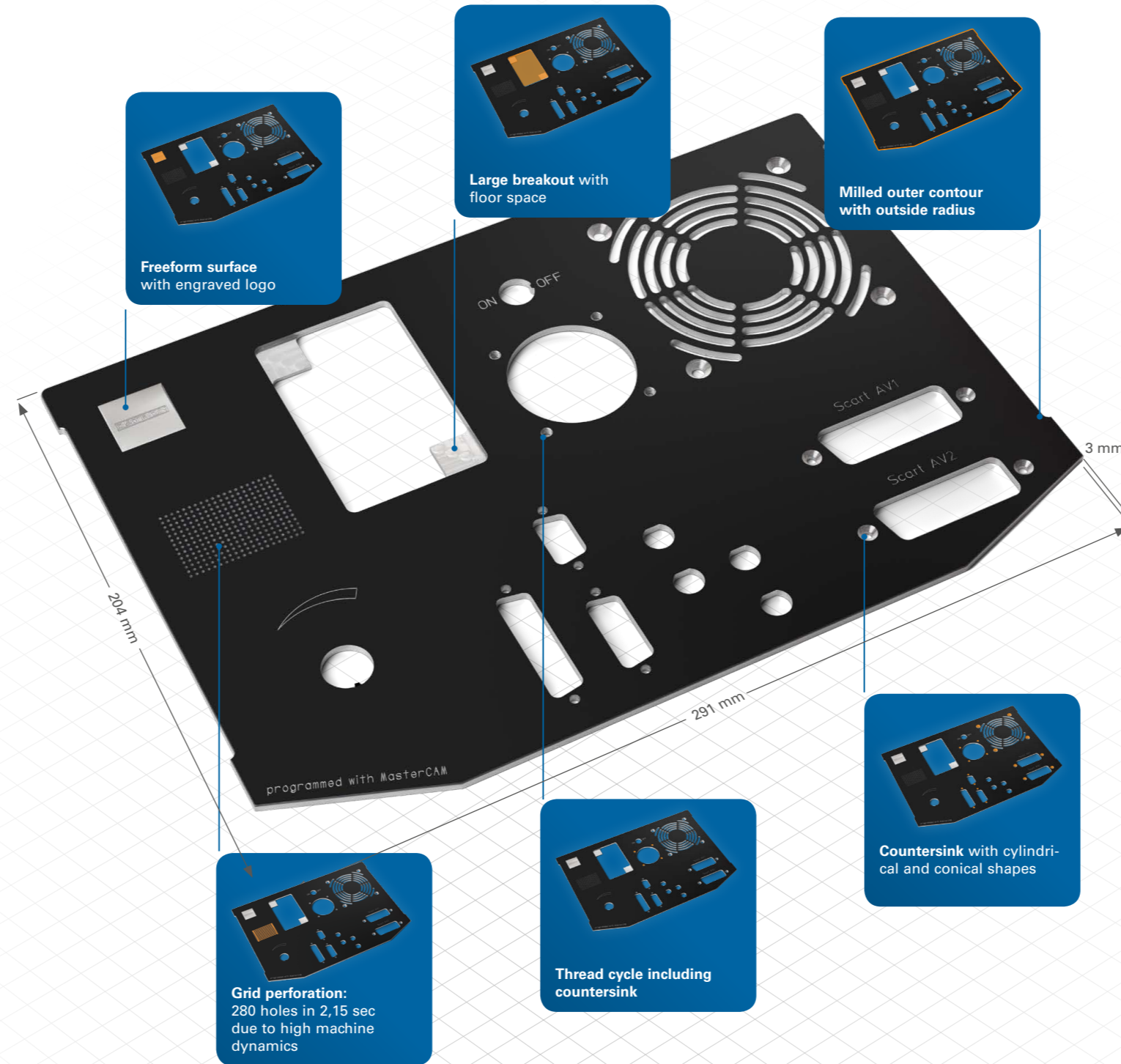
## DATRON M8Cube

- **High dynamics** through optimised control and mechanical structure designed for speed and stiffness
- **Very high clamping performance** with the smallest tools by means of high-speed precision spindles with up to 60,000 rpm and 0.6 kW to 3.0 kW output
- **Stiff, vibration-free design** of the machine allows excellent surface finishes when machining
- **High precision** due to high-quality linear guides, ball screw spindles, HSK-E 25 tool inserts (optional) and precision-crafted structural elements



We Provide Solutions For Your Requirements

Especially in the electronics and in tool building industries short change-over times, faultless reproducibility and flexibly equipped milling cycles are key. With our combinations of modular machine systems, efficient accessories and highly precise tools you are well prepared for the production requirements of today and tomorrow. Even sophisticated shapes and surface geometries that were previously effected by other production techniques can be realized with DATRON technologies most economically.

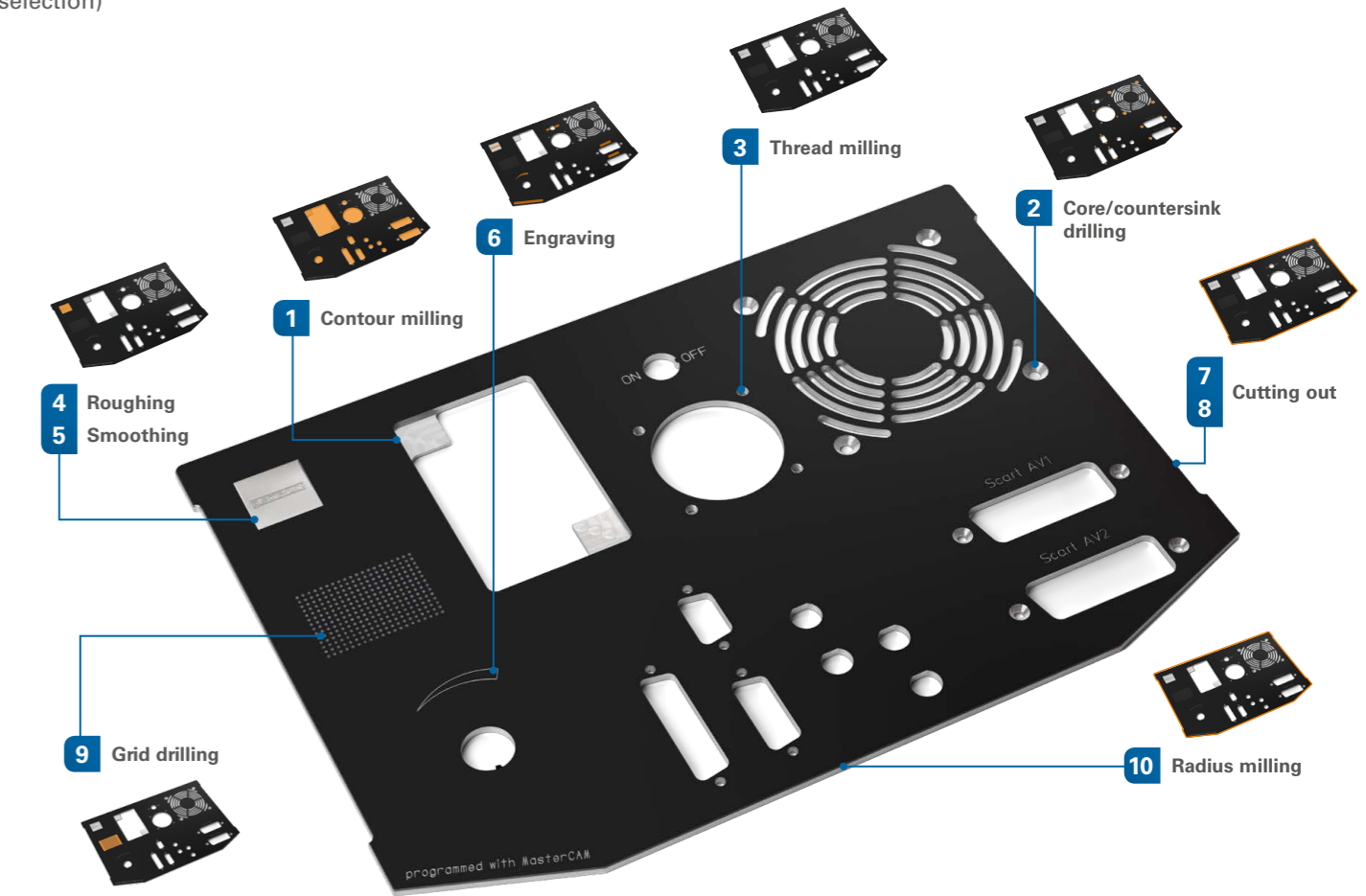


### Set-up and machining times

Very short set-up and machining times due to the perfect matching of CNC technology, software, tools and milling strategy, everything from one single source: DATRON.

Machining time with DATRON M8Cube:  
**24 minutes**

Milling strategies used (selection)



	1	2	3	4	5
<b>Machining:</b>	Contour milling	Core/countersink drilling	Thread milling	Roughing Logo	Smoothing Logo
End mill:	End mill, Ø 5 mm	End mill, Ø 2.5 mm	Thread mill, M2.5-M4	Ball nose end mill, Ø 1 mm, R0.5	Ball nose end mill, Ø 1 mm, R0.5
Number of flutes:	1	1	4	2	2
Revolutions:	58,000 rpm	58,000 rpm	45,000 rpm	58,000 rpm	58,000 rpm
Feed rate:	4.5 m/min	2.5 m/min	0.5 m/min	4 m/min	3.48 m/min
XY infeed:	5 mm	2.5 mm	0.35 mm	0.48 mm	0.48 mm
Z infeed:	2.7 mm	0.9 mm	0.7 mm	0.5 mm	0.5 mm
Dynamics:	5	5	5	5	3
CAM chord error:	0.015 mm	-	-	0.03 mm	0.008 mm
PerfectCut chord error:	0.02 mm	0.05 mm	0.05 mm	0.05 mm	0.01 mm
Article No.:	0068085E	0068425A	0068420	0068400	0068400

	6	7	8	9	10
<b>Machining:</b>	Engraving	Cutting out	Cutting out	Grid drilling	Radius milling
End mill:	Ball nose end mill, Ø 0.5 mm, R0.25	End mill, Ø 3 mm	End mill, Ø 1 mm	End mill, Ø 1 mm	End mill, Ø 6 mm, R1
Number of flutes:	2	1	1	1	2
Revolutions:	58,000 rpm	58,000 rpm	58,000 rpm	58,000 rpm	32,000 rpm
Feed rate:	0.35 m/min	2 m/min	1 m/min	0.8 m/min	2.5 m/min
XY infeed:	0.5 mm	3 mm	0.1 mm	1 mm	1 mm
Z infeed:	0.1 mm	3.2 mm	1.6 mm	0.7 mm	1 mm
Dynamics:	3	4	4	5	4
CAM chord error:	-	0.04 mm	0.04 mm	-	0.04 mm
PerfectCut chord error:	0.01 mm	0.05 mm	0.05 mm	0.05 mm	0.05 mm
Article No.:	00684005	0068430A	0068010E	0068010E	0068411